



Alpha Electronics

Units 6/7 Spectrum Business Estate
Bircholt Road
Maidstone
Kent
ME15 9YP

Alpha Electronics Thermal Survey - Building

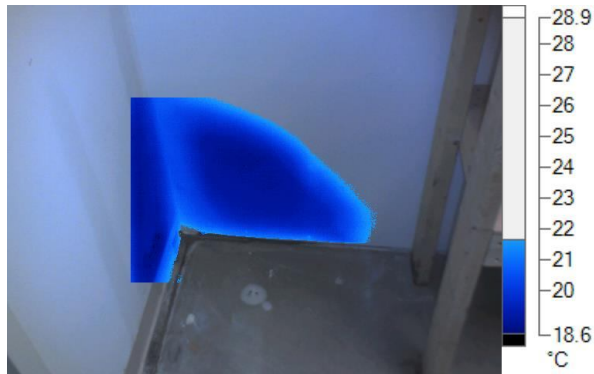


Steve Coley



Inspected By:

Inspection Date:	8/29/2006 12:29:34 PM	Area	Inside Basement
Location	Wall	Compass	
Description		Weather Conditions:	
Indoor Air Temperature		Outdoor Air Temperature	
Indoor Relative Humidity:		Outdoor Relative Humidity:	
Dew Point (inside):		Wind Speed	
Problem	Moisture	Repair Priority:	Medium
Emissivity:	0.90	Reflected Temperature:	21.1 °C
Camera Manufacturer	Fluke Thermography	Camera:	0607011

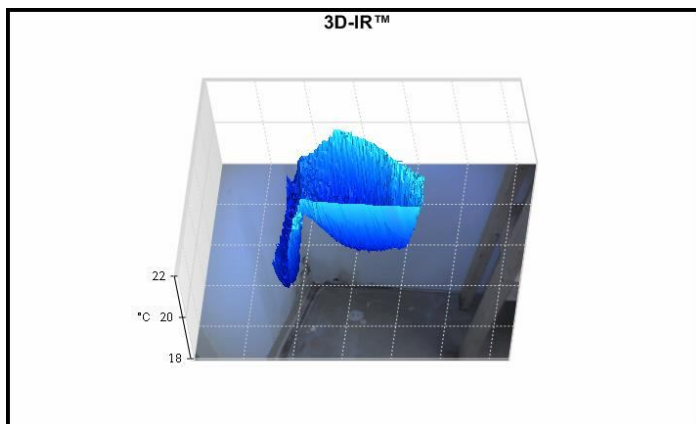


Wet Wall.is2

PROBLEM: Water has saturated the insulation & dry wall in a storage room adjacent to "concrete test sample misting room"



Visible Light Image

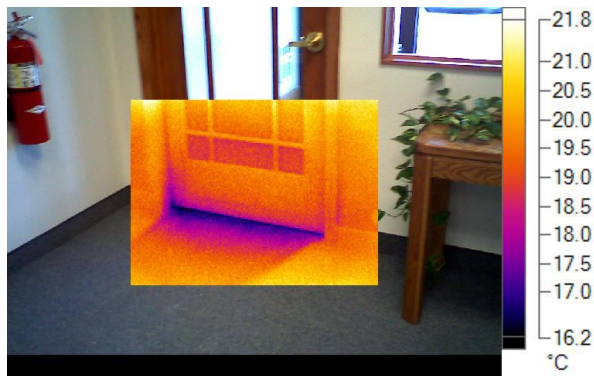


Graph

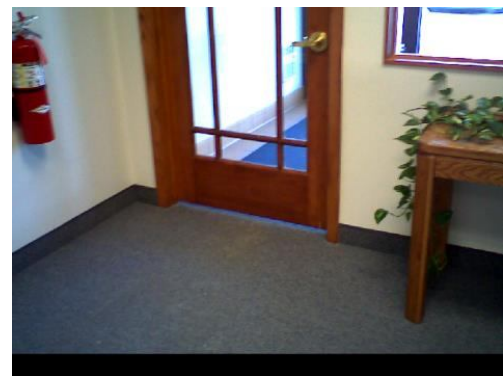


Inspected By:

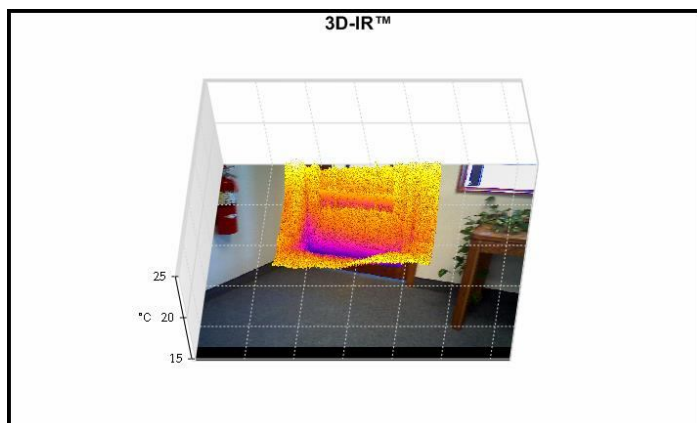
Inspection Date:	12/12/2007 4:18:57 PM	Area	
Location		Compass	
Description		Weather Conditions:	
Indoor Air Temperature		Outdoor Air Temperature	
Indoor Relative Humidity:		Outdoor Relative Humidity:	
Dew Point (inside):		Wind Speed	
Problem		Repair Priority:	
Emissivity:	0.95	Reflected Temperature:	22.0 °C
Camera Manufacturer	Fluke Thermography	Camera:	08010068



Air_Infiltration.is2



Visible Light Image

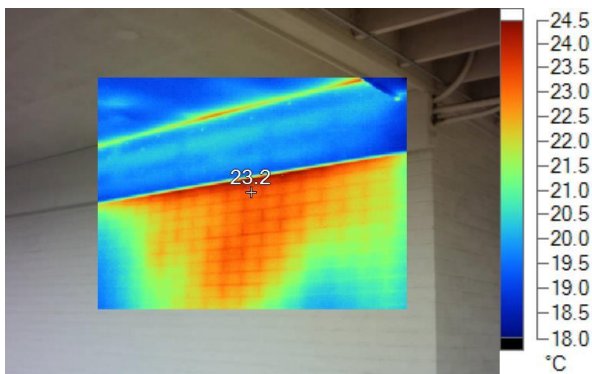


Graph



Inspected By:

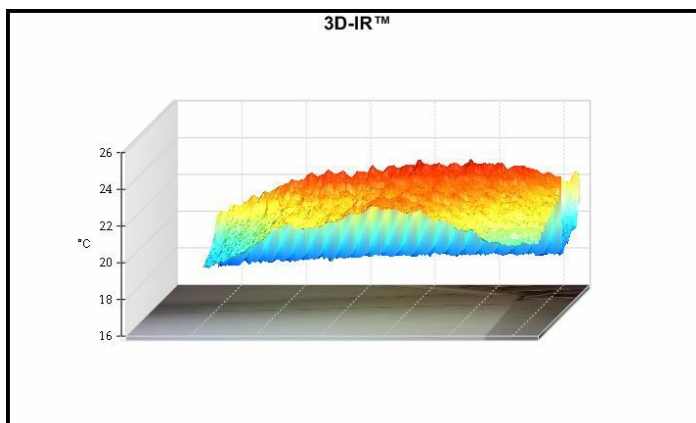
Inspection Date:	9/4/2013 12:48:57 PM	Area	
Location		Compass	
Description		Weather Conditions:	
Indoor Air Temperature		Outdoor Air Temperature	
Indoor Relative Humidity:		Outdoor Relative Humidity:	
Dew Point (inside):		Wind Speed	
Problem		Repair Priority:	
Emissivity:	0.95	Reflected Temperature:	22.0 °C
Camera Manufacturer	Fluke Thermography	Camera:	G13080059



WallAnomaly.is2



Visible Light Image



Graph

Main Image Markers

Name	Temperature	Emissivity
Centerpoint	23.2°C	0.95